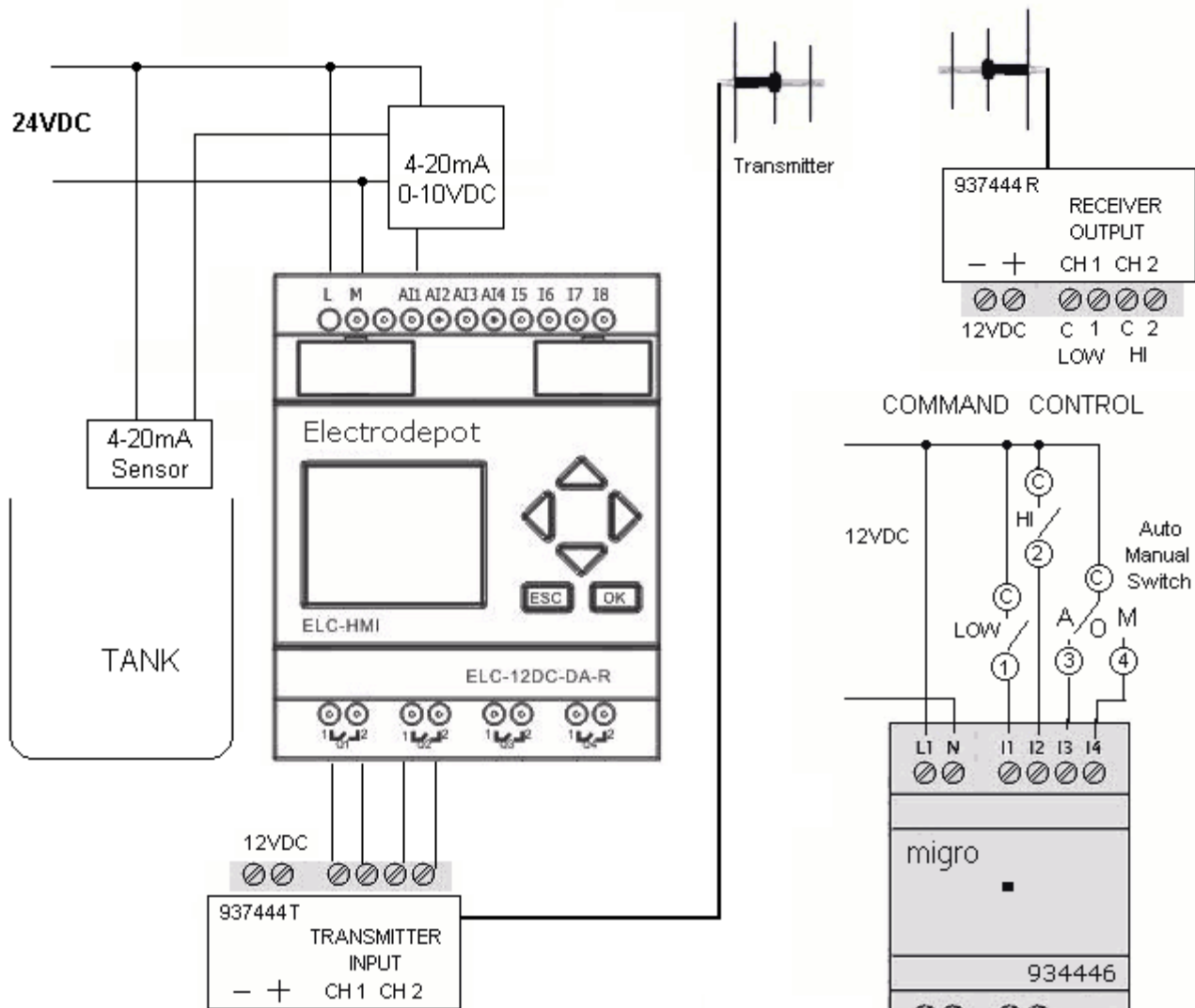
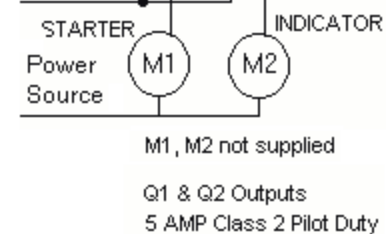


# 938488 Wireless , Monitoring Command & Control Wiring



<b>Operating Voltage:</b>	12 VDC and 24VDC
<b>Operating Temperature:</b>	-4° to +140° F (-20° to +60° C)
<b>Number of Codes:</b>	64000 codes, factory preset 16 BIT Digital
<b>Compliance:</b>	FCC CFR part 15.247
<b>Transmission Power</b>	per FCC Part 15.249, 50mV/m @ 3m
<b>Carrier Frequency</b>	433MHz, industrial band Free ISM band
<b>Current Transmitter</b>	Standby 70mA, transmitting 600mA
<b>Current Receiver</b>	Standby 70 mA, operation, 300mA
<b>Data Input TX</b>	4-20mA or 0-10vdc
<b>Relay Output</b>	10Amp max, 240V max Class 2 pilot duty
<b>Antenna Impedance</b>	50 Ohms Quarter Wave Antenna optional
<b>Enclosure</b>	NEMA 4, IP65 weatherproof enclosure



**OPERATION:**  
 Manual: Controlled by the operator  
 Automatic: Level sensor via transmitter PLC  
**Monitoring:**  
 ■ Blue light indicates the pump status  
 ■ Red light indicates the tank level is low  
 ■ Green light indicates the tank level is high